



Natura 2000 Networking
Programme on behalf of
the European
Commission



Natura 2000 Networking Programme managed in
partnership by project partners EUROPARC
Federation, Eurosites and European Landowners
Organization (ELO)

Twinning-lite

Twinning-lite is a regular bilateral or multilateral exchange of information, between pre-determined partners, for the purpose of more effectively achieving site management objectives.

Introduction

Twinning-lite provides a simple, easily adaptable tool for land managers to work in partnership to exchange experience, increase knowledge and find practical solutions for the improvement of Natura 2000 site management.

Productivity and Progress...

As an approach, Twinning-lite provides a way to co-operate and share knowledge. It is designed to yield greater productivity and progress on subjects of mutual interest than would be achieved through individual action.

Discover and Share...

It enables participants to learn from the experience of others and maximise the outreach of your own valuable knowledge.

Added Value...

Twinning-lite adds value to the work of participating partners and their organisations. Professional development is central to the methodology of Twinning. Participants will acquire new knowledge and practical skills, expanding their capacity for informed site management, and improving the knowledge pool of the organisation for which they work.

Designed by you...

Twinning-lite does not require a 'contract' between partners. However, it is worthwhile jointly agreeing a simple statement of the mutual objectives of potential twinning partners – a very short description of what the participating partners agree to do together to advance site management is always a good idea. It provides the basis for deciding about the resources to be allocated for a twinning, always determined by the partners on the basis of what they aim to achieve together. Things such as staff time, planned activities and the duration of the twinning should be considered and agreed on the basis of resource availability and desired outcome of the twinning.

Improved visibility and funding potential...

Via the Natura 2000 Networking Programme, Twinning-lite will bring your work to the attention of an international audience. It will raise awareness of your site and the work that you do. Joint-working through twinning-lite will attach a valuable European dimension to your work, often essential to increase funding opportunities.

Requirements

Twinning-lite is designed to have minimum paperwork, maximising time available for the productive elements of the twinning. The following, easy-to-do tasks are the only requirements to participate in Twinning-lite:

- A letter of organisational support from appropriate levels of management for each twinning partner.
- A brief (non-binding) statement, undersigned by all partners, briefly indicating the focus of the twinning, the proposed activities and a rough indication of the timescales involved - expected duration and timings of periodic progress evaluation.
- A concise evaluation report upon the completion of a twinning.

These items will be used by the Natura 2000 Networking Programme (NNP) partners to promote your work, via a dedicated page within the NNP webpage natura.org.

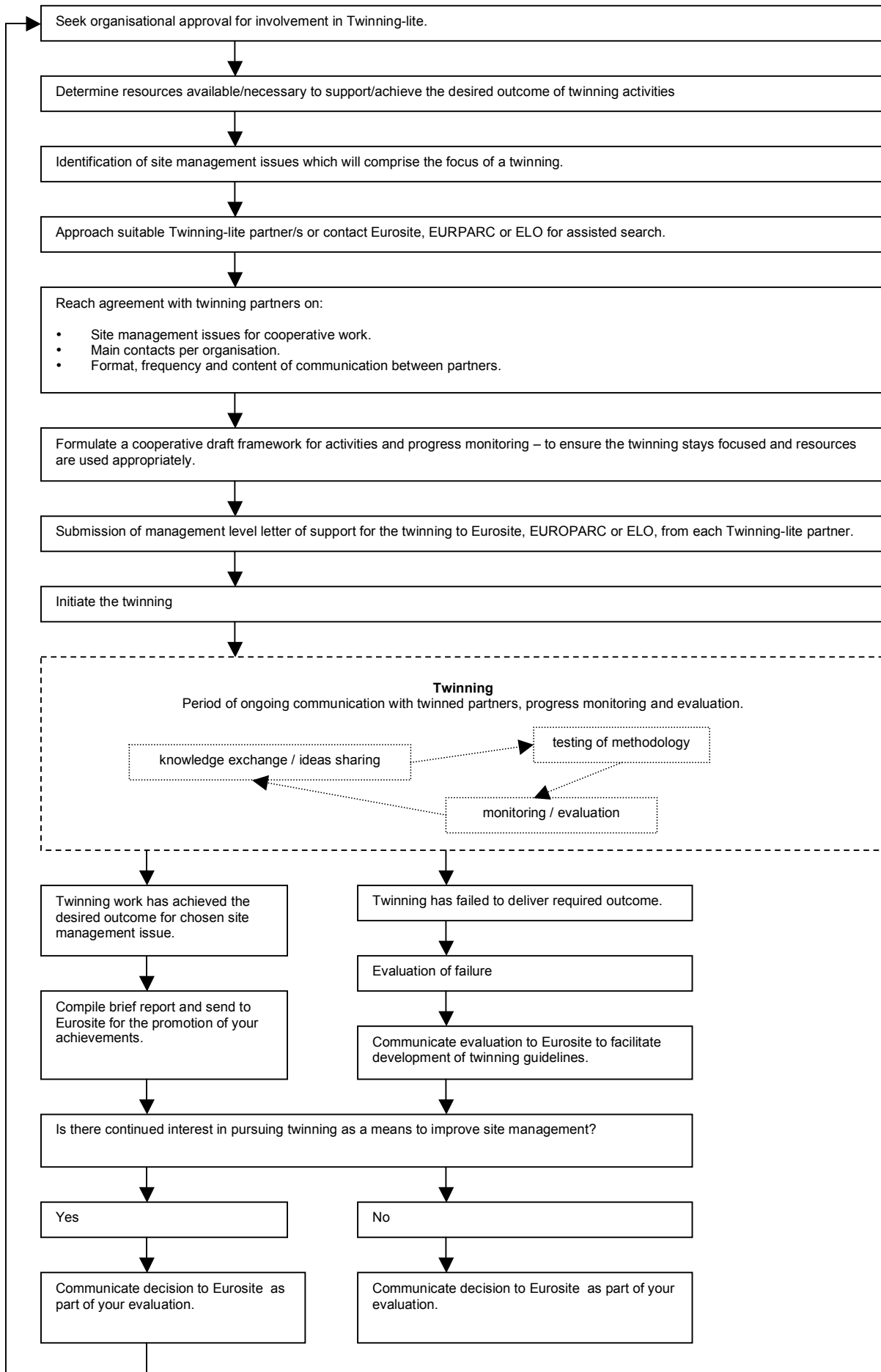
What Makes a Good Twinning-lite?

Each Twinning situation is unique – what it is set-up to achieve will depend entirely on the partners involved and the benefits they see. However, certain ingredients are essential to make twinning effective. From experience, the following are highlighted as particularly advantageous:

1. Compatibility	Twinning between sites of a similar size and comparable habitats will provide rich scope for discussion on subjects such as habitat and management techniques, as well as likely common issues and features. However, this is not essential – Twinning-lite can be focused on very specific management issues that sites have in common, which are not necessarily linked to the scale or composition of a site.
2. Co-operation	A willingness to share, report and publish information between the twinned sites for mutual gain is essential. Making this information available to a wider audience will earn the partners deserved international exposure.
3. Clear Purpose	All involved must be clear about what the twinning aims to achieve. Prior to twinning, each manager normally has a good idea of the objectives for their site. This provides a valuable starting point for discussion. It will help individual managers to identify information, skills and experience valuable in a twinning partner; also, it will form the basis of what is jointly agreed through twinning.
4. Common Products	<p>Information sharing and knowledge exchange features of healthy twinning are extremely valuable products in their own right. However, to ensure there is commitment and support from partner organisations and the investment of necessary resources, it is helpful to identify more tangible twinning products. Options include:</p> <ul style="list-style-type: none"> • Jointly developed solutions to site-based problem areas or priorities for development; • Giving work at local level an international, European dimension; • Personal development opportunities for staff, either through an exchange scheme, or, through contact with other professionals and new areas for work; • Share ecological data, compare site-based management practices and approaches; • A workshop or seminar to bring the twinned sites and planned work to wider audiences; • A joint research programme to highlight similarities and difference between the sites and what approaches have or have not been used; • Preparation of a joint project proposal; • Development and publication of good practice guidance or advice. <p>Such products will not only help to justify resource investments, but also:</p> <ul style="list-style-type: none"> • Formally document activities in an internationally recognised format and use this internally and externally to demonstrate the importance of site-based work; • Demonstrate what sites individually and in collaboration are doing to discharge conditions of funding – for example, a condition of LIFE funding is to communicate site-based project work to a European audience; • Provide valuable evidence of how EU policies are being implemented and integrated within sites and in different locations across Europe; <p>The key point here is that twinning enables each site to achieve more than they would by acting individually.</p>
5. Communication	It is important to agree on the methods and frequency of communication

	<p>between partners. Effective communication will streamline twinning activities and keep activities on-target.</p> <p>Reduce communication overheads by making use of VOIP communication such as Skype http://www.skype.com/intl/</p> <p>Facilitate twinning partner communication, and further the international exposure of your work by creating a blog. 'Blogger' at https://www2.blogger.com/start is an easy to use (and free) facility to create and host a blog. This will allow twinning partners shared space to keep an online diary of progress, and to exchange the latest information. Other site managers from around the world will also be able to read and comment on twinning progress – this will further the reach of your management knowledge and potentially bring-in advice from outside of the twinning partnership.</p>
--	---

Implementation of Twinning-lite,



Discover more – Start a twinning

To learn more about Twinning-lite, or to initiate a twinning, please contact:

Roelof Heringa

c/o
ing.R.B.Heringa,
Project Manager & International Affairs, Staatsbosbeheer, Directie Oost

Visit address: Binnensingel 3, 7411 PL Deventer, NL

Postal address: Postbus 6, 7400 AA Deventer NL

Tel. : +31-570747100 / +31-570747128

Mobile: +31-655306276

Fax: +31-570747111

e-mail: r.heringa@staatsbosbeheer.nl

The opinion expressed in this document are those of the authors and do not necessarily reflect the views of the European Commission